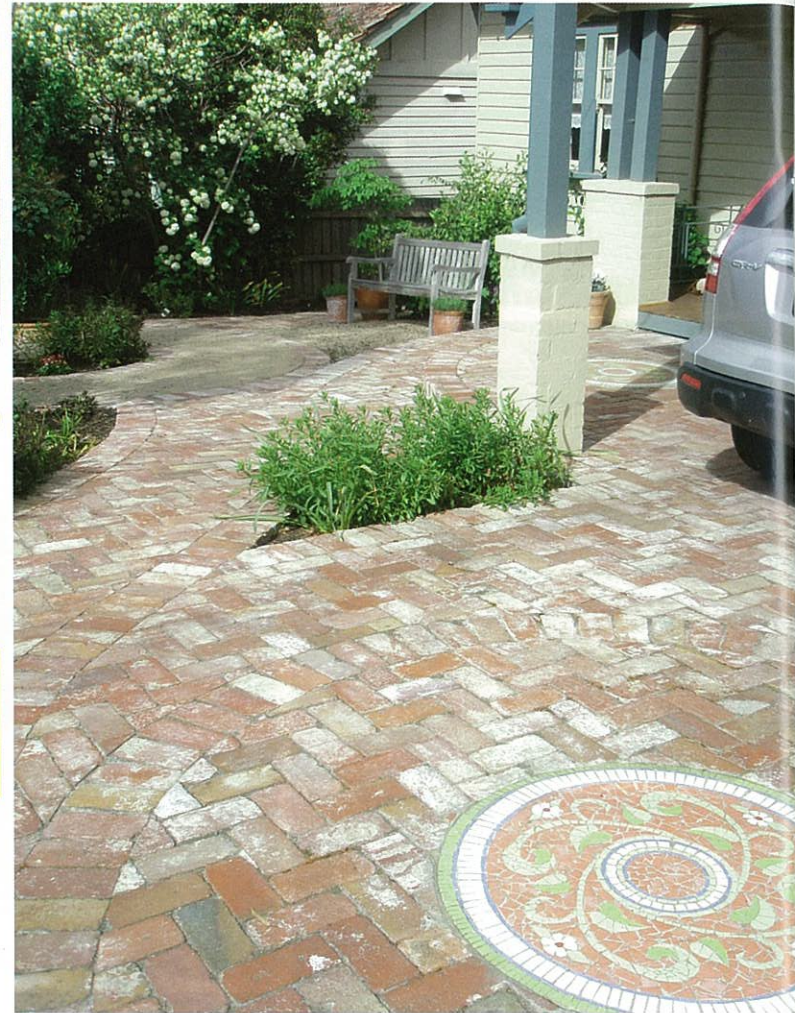


# GARDEN DESIGN FEST 2008

STORY AND PHOTOS BEV READ MAILDM



Wendy Clarke entrance. (above)  
Wendy Clarke driveway. (right)  
Richard Bellemo fence design. (below)

Melbourne's popular Garden Design Fest was held on 15 and 16 November 2008. This unique event, first held in 2004, then in 2006, was again a great success.

Organized by the Rotary Club of Kew, this event attracts many of Melbourne's top garden designers, who join with their clients to open private gardens to the public, for just one weekend, every two years, with different gardens being presented each time.

Promoted by John Patrick, event chairman, landscape architect and media personality, and co-ordinated by Jenny Wade and Graham Sheahan, the Garden Design Fest aims to raise funds for a variety of different charities.

With numbers limited to 24 people per day, the official Designfest Bus Tour took people to see 17 of the 22 gardens that were on display over the two day event. It would be impossible to see this many under your own steam, and with many of the keen participants having been on previous Design Fest bus tours, anticipation for this biennial event was high.



Richard Bellemo water feature. (top left)  
Bellemo succulent bowl. (top middle)  
Christian Jenkins Design. (top right)  
Georgina Martin's waterbowl. (above)  
Ian Barker design. (middle right)  
Steven Taylor design. (right)

## THE DESIGNERS

This year, designers included Ian Barker, Carey Cavanagh, John Patrick, Christian Jenkins (**AILD**M member) Steve Taylor, Pru Metcalf and Wendy Clarke, Kate Seddon, and Georgina Martyn (**AILD**M member). The selection of gardens was outstanding, with a range of different styles on offer from formal to informal, in small courtyards up to large, one acre gardens with native plantings and billabongs. Every designer approaches a given situation in a very different way, and last year new entrants to the Fest have shown particular flair with their designs. Similarly, the differences between male and female designers at Garden Design Fest were apparent too.

## AN ESSENDON BUNGALOW

Wendy Clarke, of Dirtscape Dreaming, was asked to design a garden for a traditional bungalow in Essendon. It is a particularly feminine design and planting plan – a combination of client taste and designer

knowledge. Essentially a cottage garden, the front entrance is of particular merit. It could have been very ordinary but level changes and the paving patterns constructed from old red bricks, incorporate the front entry to the house and carport seamlessly. Circular paving and mosaics add interest and charm. A row of *Malus* 'Pink Parfait' with their lovely burgundy and pink tones fit beautifully with the rest of the cottage plantings of roses, gaura and liriop. A teepee sculpture, covered with *Sollya hetrophylla*, added a touch of whimsy.

The rear garden is charmingly practical, with an area of lawn, soft plantings, water feature and climber covered screens hiding utility areas. A veggie patch, paved area and play space make this child friendly and productive. A lovely old timber shed, which looks like an old railway sentry box, adds character and a copper fountain near the vine-covered pergola completes the picture.

